



BENTEL
SECURITY
A Tyco International Company



SECURITY SYSTEMS
CATALOG 2012 • 2013

It's as easy as Black or White.



The new ABSOLUTA T-LINE keypads take security to the next level, combining innovative technology with a sleek design -- available in classic black or white to fit any décor.

Now there's a choice.
ABSOLUTA T-White and T-Black keypads



**BENTEL
SECURITY**
A Tyco International Company



Security Systems

1-7	Control Panels
8-10	Keypads & Management Devices
11-13	Wireless Systems
14-17	Communications & Programming Systems
18	Signalling Devices
19-20	Detectors
21	Power Supplies
22	Management Software



ABSOLUTA Control Panels Platform

COMMON FEATURES

(Absoluta104, 42, 16 control panels):

- Voice dialer on board
- Voice messages for each event/zone
- Total duration: 20 minutes
- Telephonic voice guide
- Program up to 32 phone numbers
- Fully customizable digital dialer
- USB port for USB keys and PC programming
- Shortcut types of arming keys per four partitions
- Basic home automation functions
- Fully programmable outputs: polarity, timing, oscillation, and event triggers
- Event logger contains 2,000 events
- On board connectors for GSM and IP add on boards
- Powerful new Bentel Operating Security Software (BOSS) manages ABSOLUTA
- ABSOLUTA panel available in industrial metal cabinet or sleek plastic cabinet
- Vibration and Roller-Blind Detector support



ABSOLUTA104 Expandable Hybrid Control Panel for Large-Scale Installations

- Up to 8 on-board zones
- Expandable to 104 input zones
- Up to 32 wireless zones
- Connect to 16 LCD or LED keypads
- 250 keys/tags
- 16 partitions
- Up to 6 on board outputs expandable to 50



ABSOLUTA42 Expandable Hybrid Control Panel for Medium-Size Installations

- Up to 8 on-board zones
- Expandable to 42 input zones
- Up to 32 wireless zones
- Connect to 8 LCD or LED keypads
- 128 keys/tags
- 8 partitions
- Up to 6 on board outputs expandable to 20



ABSOLUTA16 Expandable Hybrid Control Panel for Small/Medium-Size Installations

- Up to 8 on-board zones
- Expandable to 16 wired input zones
- Up to 32 wireless zones (total 32 including wireless)
- Connect to 8 LCD or LED keypads
- 64 keys/tags
- Up to 6 on board outputs

ABSOLUTA add-on boards

ABS-GSM GSM/GRPR/SMS Communication Board for ABSOLUTA Control Panels

- Quad band GSM module with remote antenna
- GSM voice messages transmission
- Voice messages sent after commands from the control panel
- Automatic message for panel fault
- SMS bidirectional communication over GSM (incoming and outgoing management of SMS for home automation functions)
- Contact ID transmission over GSM voice channel
- Credit and SIM control via SMS and from LCD keypad
- SMS for each zone alarm/event
- Caller ID recognition for outputs activation
- Contemporary communications via PSTN (voice) and via SMS management
- Answering machine through GSM channel



ABS-IP LAN/WAN Communication Board for ABSOLUTA Control Panels

- LAN/WAN internet protocol
- 128 bit encryption (secure)
- Up/download and event transmission
- Alarm reception via Sur-Gard® receivers
- Integration protocol for third party systems



Coming Soon

AS-100 Audio Station for ABSOLUTA Control Panels

- Equipped with speaker/microphone
- New modern look
- Specifically designed for 2-way voice verification
- 4-wire connection to module
- Surface or single-gang box mount



ABSOLUTA Accessories

Model	Description
ABS-M	Metallic box dimensions: 310x403x103 mm (without antenna); battery up to 17Ah
ABS-P	Plastic box dimensions: 319x352x92 mm (without antenna); battery up to 7Ah
M-IN/OUT	Module with 6 programmable IN/OUT terminals
B-ISOL	Isolator module for isolating two sections of the BPI bus
BLUM03	USB modem for remote panel programming
USB5M	5 mt USB cable for local panel programming
MAXI ASNC	Anti-tamper and snatch Kit
BXM12/30-50 BPI	Power Supply

ABSOLUTA Features Comparison Chart

Features	ABS16	ABS42	ABS104
Number of keypads	8	8	16
Number of codes (Level 4 + installer + user)	1 + 1 + 31	1 + 1 + 63	1 + 1 + 127
Number of keys	64	128	250
Number of Key / Card readers	16	32	32
Number of input expander	up to 16	up to 16	up to 32
Number of output expander	up to 6	up to 16	up to 16
Number of power supply stations	up to 4	4	4
On board zone + programmable I/O terminals	4 + 4	4 + 4	4 + 4
Max number of wired zones	16	42	104
Max number of wireless zones	32	32	32
Total max number of combined (wired+wireless) zones	32	42	104
Programming port	RS232 – USB	RS232 – USB	RS232 – USB
Event buffer	2000 (EN50131)	2000 (EN50131)	2000 (EN50131)
Arming scheduler	Yes	Yes	Yes
Timers	Yes	Yes	Yes
Telephone numbers	32	32	32
Central station phone numbers	Up to 32	Up to 32	Up to 32
Vocal messages (number-duration)	206 - 20 minutes	206 - 20 minutes	206 - 20 minutes
2-way voice (Audio Station)	Optional	Optional	Optional
Telephone voice guide	Yes	Yes	Yes
Bell circuit	1 relay - 1A	1 relay - 1A	1 relay - 1A
On board output	2 OC (500mA)	2 OC (500mA)	2 OC (500mA)
Max number of output	6	20	50
Number of partitions	8	8	16
Type of activation per partitions	Arm, partition A,B,C,D	Arm, partition A,B,C,D	Arm, partition A,B,C,D
Remote DTMF device management	Yes	Yes	Yes

KYO320 Expandable Hybrid Control Panel for Large-Scale Installations

- 8 on-board zones
- Expandable to 264 wired zones
- Expandable to 64 wireless zones (433 and/or 868 MHz frequency)
- 6 programmable outputs on-board: 3 (3 A relay) + 3 (1 A open-collector)
- Expandable to 102 programmable outputs connect to 32 remote LCD keypads
- 10,000 event buffer size
- 5 installers and 195 users codes
- 500 keys/tags
- 16 + 16 keyfobs
- 32 readers
- 50 telephone numbers
- 2 operating modes: Normal or "EN-50131"
- Comprehensive scheduler with 64 timers for basic home automation functionality
- Integrated access control functionality

KYO320 Accessories

Model	Description
K3/VOX2	62 message voice board 8 minutes and 44 seconds message time total
K3/PRT2	Printer card
M-IN/OUT	Module with 6 programmable IN/OUT terminals
B-ISOL	Isolator module for isolating two sections of the BPI Bus
DPU-414-30B-E	Thermal printer for KYO320
PW-4007-E1-E	AC adapter for printer DPU-414
NAP-0112-025	Rolls of thermal paper for printer DPU-414 (5 pcs)
K-NET	IP Module



KYO Unit

KYO32G Expandable Hybrid Control Panel for Medium-Size Installations

- 8 on-board zones
- Expandable to 32 wired zones
- Expandable to 32 wireless zones
- Outputs: 5 (500 mA) expandable to 16
- Outputs: 3 (150 mA) expandable to 14
- Connect to 8 remote LCD or LED keypads
- 8 partitions
- 256 event buffer size
- 1 installer and 24 users codes
- 128 keys/tags
- 16 Keyfobs
- 16 readers
- 8 telephone number
- Voice dialer function with NC2/VOX
- Supports Vibration and Roller-Blind detectors



KYO32 Expandable Hybrid Control Panel for Medium-Size Installations

- 8 on-board zones
- Expandable to 32 wired zones
- Expandable to 32 wireless zones
- Outputs: 3 (150 mA) expandable to 14
- Outputs: 3 (150 mA) expandable to 14
- Connect to 8 remote LCD or LED keypads
- 8 partitions
- 256 event buffer size
- 1 installer and 24 users codes
- 128 keys/tags
- 16 keyfobs
- 16 readers
- 8 telephone number
- Voice dialer function with NC2/VOX
- Supports Vibration and Roller-Blind detectors





KYO8GW Control Panel for Small-Scale Installations

- 8 on-board zones
- Manage up to 8 wireless zones
- Outputs: 5 (500mA)
- Connect to 8 keypads
- 4 partitions
- 128-event buffer size
- 1 installer and 24 users codes



KYO8W Control Panel for Small-Scale Installations

- 8 on-board zones
- Manage up to 8 wireless zones
- Outputs: 3 (150mA)
- Connect to 8 keypads
- 4 partitions
- 128-event buffer size
- 1 installer and 24 users codes



KYO4 Control Panel for Small-Scale Installations

- 4 On-board zones
- Outputs: 3 (150mA)
- Connect to 8 keypads
- 4 partitions
- 128-event buffer size
- 1 installer and 24 users codes
- 128 keys/tags
- 16 readers
- 8 telephone number
- Voice dialer function with NC2/VOX
- Supports Vibration and Roller-Blind detectors

KYO Unit Accessories

Model	Description
NC2/VOX	8 message voice board (90 seconds message time)
UNBOX-L	Metallic large box dimensions 339x488x108 battery up to 17Ah
UNBOX-M	Metallic medium box dimensions 241x279x87 battery up to 7Ah
BOX-PLUS	Plastic box dimensions 309x227x89 battery up to 7Ah
M-IN/OUT	Module with 6 programmable IN/OUT terminals
B-ISOL	Isolator module for isolating two sections of the BPI bus
ASNC	Anti tamper BOX-PLUS
MAXIASNC	Anti tamper BOX-M and BOX-L
TRF-UNIT	Transformer compatible with KYO4, KYO8W and KYO32

KYO | Control Panels Overview

Features	KYO32/32G	KYO8W/8GW	KYO4	KYO320
Number of keypads	8	8	8	32
Number of codes (installer + user)	1 + 24	1 + 24	1 + 24	5 + 195
Number of keys	128	128	128	500
Number of Key/Card readers	16	16	16	32
Number of input expansions	4	0	0	32
Number of output expansions	2	0	0	16
Number of power supply stations/BPI repeater	0	0	0	8
On board zone	8	8	4	8
Max number of wired zones	32	8	4	264
Max number of wireless zones	32	8	0	64
Total max number of combined (wired + wireless) zones	32	8	8	328
Programming port	RS232	RS232	RS232	RS232
Event buffer	256	128	128	10,000
Arming/Disarming scheduler	Only Arm	Only Arm	Only Arm	Yes
Timers	No	No	No	Yes
Voice telephone numbers	8	8	8	Up to 32
Central station phone numbers	8	8	8	Up to 8
Vocal messages (number - duration)	8-88 sec	8-88 sec	8-88 sec	62-523 sec
Telephone voice guide	No	No	No	Yes
Bell circuit	1 relay	1 relay	1 relay	3 relay programmable
On board programmable output	3 oc 150mA (32) 5 oc 500mA (32G)	3 oc 150mA (8W) 5 oc 500mA (8GW)	3 oc 150mA	3 oc 1 A
Max number of output	14 (32) 16 (32G)	3 (8W) 5 (8GW)	3	96
Number of partitions	8	4	4	32
Type of activation per partitions	Arm, partition A,B	Arm, partition A,B	Arm, partition A,B	Arm, partition A,B,C,D



Norma4 & Norma8 Control Panels:

- 4 to 8 on-board zones
- Outputs: 1 (3 A relay) + 1 (200 mA open collector)
- Connect to 8 LED keypads
- 4 groups of partitions
- 1 installer and 5 users codes
- 128 keys/tags
- 1 key-reader on-board expandable up to 8 remote readers
- Easy installation directly by panel also without a keypad

Control Panels | Compatibility Chart

Panels Devices	ABSOLUTA	KYO320	KYO32 32G 8W 8GW	KYO4	NORMA4/8 T
M-IN/OUT	Yes	Yes	Yes (only 32/32G)	No	No
K3/VOX2	/	Yes	/	/	/
K3-PRT2	/	Yes	/	/	/
NC2/VOX	/	/	Yes	Yes	/
VOX-REM	/	Yes	Yes	Yes	/
B-ISOL	Yes	Yes	Yes	Yes	Yes
PREMIUM LED	Yes	No	Yes	Yes	No
PREMIUM LCD	Yes	Yes	Yes	Yes	No
CLASSIKA LED	Yes	No	Yes	Yes	Yes
CLASSIKA LCD	Yes	Yes	Yes	Yes	No
T-WHITE	Yes	Yes	Yes	Yes	No
T-BLACK	Yes	Yes	Yes	Yes	No
PROXI/ECLIPSE	Yes	Yes	Yes	Yes	Yes
VRX32/433	Yes	Yes	Yes (from rel. 2.1x)	No	/
VRX32/868	Yes	Yes	Yes (from rel. 2.1x)	No	/
VECTOR RX/8	No	Yes	Yes	No	/
B-NET/K-NET	No	Yes	No	No	/
B/MOD2	No	Yes	Yes	Yes	/
BXM12/B	Yes	Yes	No	No	No
BXM12/U	Yes	Yes	Yes	Yes	Yes
Bentel Security Suite	No	Yes	Yes	Yes	/
Bentel Operating Security Software	Yes	No	No	No	/

Keypads & Management Devices



ABSOLUTA T-LINE Keypads

T-BLACK Keypad

- Color: Black with blue backlight
- Integrated proximity reader for keys, cards and tags
- 3 on-board I/O terminals
- Supports Roller Blind detectors
- Very simple and fast installation without cabling problems: terminals only on the back
- Integrated "spirit level" for easy installation
- 2x16 blue LCD display
- Adjustable display contrast
- 4 system status LEDs
- 3 proximity reader LEDs: arming, A and B arming



New

T-WHITE Keypad

- Color: White with blue backlight
- Integrated proximity reader for keys, cards and tags
- 3 on-board I/O terminals
- Supports Roller Blind detectors
- Very simple and fast installation without cabling problems: terminals only on the back
- Integrated "spirit level" for easy installation
- 2x16 blue LCD display
- Adjustable display contrast
- 4 system status LEDs
- 3 proximity reader LEDs: arming, A and B arming



New

Some products are not available in all countries. Contact your local distributor for details.

PREMIUM LINE Keypads

- Integrated proximity reader for keys, cards and tags
- 3 on-board I/O terminals
- Supports Roller Blind detectors
- Surface mounting or flush mounting (with optional kit)
- Very simple and fast installation without cabling problems: terminals only on the back
- Integrated "spirit level" for easy installation



PREMIUM LCD Keypad

- 2x16 blue LCD display
- Adjustable display contrast
- 4 system status LEDs



PREMIUM LED Keypad

- 16 zone LEDs to display all 3 zone states
- 8 system status LEDs
- 3 proximity reader LEDs: arming, A and B arming

PREMIUM Line | Keypad Accessories

Model	Description
BKP-BOX	Flush-mounting kit: flush-mounted box, mortar-proof cover, cap with Bentel logo, flush-mounted back
BKP-FMB	Flush-mounted box, mortar-proof cover, cap with Bentel logo
BKP-FBK	Flush-mounted back

CLASSIKA Series Keypads

- Great value
- Large and easy to use keys
- Very simple and fast installation without cabling problems: terminals only on the back

CLASSIKA LCD Keypad

- 2x16 blue LCD display
- Adjustable display contrast
- 3 system status LEDs



CLASSIKA LED Keypad

- 16 zone LEDs to display all 3 zone states
- 8 system status LEDs



Proximity Readers



PROXI

- Proximity key/card/tag reader for indoor/outdoor use (IP34)



MINIPROXI

- Proximity tag 50x30 mm



PROXI-CARD

- Proximity card



SAT

- Proximity key



PROXI TAG

- Proximity tag 60x30 mm
- Available in White, Gray and Black



ECLIPSE 2

- Proximity key reader for indoor use
- Possibility to use in combination with SAT, Miniproxi and Proxi-card
- Universal reader module
- Availability of 19 different covers to be adapted to the most used finishing styles



Wireless Receivers

Choose between Bentel's 433 MHz or 868 MHz families of wireless devices. The 433 MHz family of devices offer proven range and reliability. The 868 MHz family of devices are perfect for installations where the 433 MHz frequency band is prone to interference.



New

VECTOR VRX32-433-EN 32 Zone Wireless Receiver

- EN 50131 Approved Grade 2
- Available in 433 MHz
- Supports up to 32 wireless detectors
- Supports up to 16 wireless key-fobs
- Easy installation
- Compatible only with ABSOLUTA control panels



VECTOR VRX32-433 | VRX32-868 32 Zone Wireless Receiver

- Available in 433 MHz and 868 MHz
- Supports up to 8 wireless detectors
- Supports up to 8 wireless keyfobs
- Easy installation
- Compatible with the following control panels: KY08W, KY08GW, KY032, KY032G, KY0320
- Can be used in conjunction with Vector/Quad module (only Kyo320) for increased wireless range



VECTOR/RX8 8 Zone Wireless Receiver

- Available in 433 MHz
- Supports up to 8 wireless detectors
- Supports up to 8 wireless keyfobs
- Easy installation
- Compatible with the following control panels: KY08W, KY08GW, KY032, KY032G, KY0320
- Can be used in conjunction with Vector/Quad module (only KY0320) for increased wireless range

VRP32-433 Wireless Repeater

- Greatly extends the range of VRX wireless receiver
- Compatible with KYO series and ABSOLUTA
- Quick enrolment of wireless devices
- AC Powered with Battery Backup
- Status LEDs for AC, battery and RF Jam
- Up to four repeaters can be supported per system
- Wall and case tamper protection
- Esthetically pleasing design
- Dimensions: 175x115x34 mm



New

VECTOR/QUAD Wireless Range Expansion Module

Use a Vector/Quad module to connect up to 4 wireless receivers to the control panel and expand the wireless coverage area. Place the additional wireless receivers strategically throughout the building to prevent wireless deadspots and maximize the wireless coverage.

Note: the Vector/Quad does not provide additional zones.

- Voltage Range: 12Vdc - 14Vdc
- Current: 55 mA, plus current draw of each receiver module connected
- Compatible receiver modules: VRX32-433 and Vector/RX8
- Compatible control panels: KYO320



Wireless Devices

KMD20 (868 MHz) | AMD20 (433 MHz) Wireless Pet-Immune PIR Motion Detector

- Cover: 26 beams on 4 levels, long, medium and short-range
- Battery: Lithium mod. CR123A



KMD20NP (868 MHz) | AMD20NP (433 MHz) Wireless PIR Motion Detector

- Cover: 26 beams on 4 levels, long, medium and short-range
- Battery: Lithium mod. CR123A





**KMC10 (868 MHz) Wireless Door/Windows
Magnetic Contact**

- Dimensions (WxHxD): 75x31x22 mm
- Battery: 1 Lithium mod. CR2



**KMC20 (868 MHz) Vanishing Wireless Door/Windows
Magnetic Contact**

- Dimensions (WxHxD): 57x25x5.3 mm
- Battery: 1 Lithium mod. CR2032



**KMC30 (868 MHz) | AMC30 (433 MHz) | AMC30M
(433 MHz) Wireless Door/Windows Magnetic Contact
with Auxiliary Input**

- Auxiliary input supports roller blind detectors
- Dimensions (WxHxD): 75x43x25 mm
- Battery: 1 Lithium mod. CR123A
- Also available in brown (AMC30M)



**KRC10 (868 MHz) | ARC20 (433 MHz)
4 Button Wireless Key**

- Code combinations: 1.048.576
- Dimensions (WxHxD): 33x58x12 mm
- Batteries: 2 Lithium mod. CR2025



KRP10 (868 MHz) Personal Panic Button

- Belt clip
- Water resistant
- Dimensions (WxHxD): 33x58x12 mm
- Batteries: 2 Lithium mod. CR2025



**KSD20 (868 MHz) | ASD20 (433 MHz) Wireless Smoke
Detector**

- Dimensions: base diameter 147 mm, height 52.8 mm
- Batteries: 2 Lithium batteries mod. CR123

Communications & Programming Systems



BGSM-G GSM/GPRS Universal Wireless Communicator

- Can be used as a Primary, Backup or Standalone communicator
- Compatible with most control panels
- Intelligently monitors phone line and switches automatically to GSM network
- 4 configurable inputs
- 4 programmable open-collector outputs
- Send SMS and Contact ID "Trouble" and "Periodic" reports
- System can be programmed via mobile phone or software application
- SMS dialer – up to 8 telephone numbers
- Contact ID communicator – up to 4 telephone numbers
- Reliable, fast digital communications via GPRS (compatible with Sur-Gard® System II and System III receivers)
- Remote activation of outputs through caller recognition (zero charges) or by sending an SMS
- Remote control feedback (SMS message or ring)



BGSM-120 GSM/GPRS Universal Communicator

The BGSM-120 offers Voice Dialer functionality in addition to the long list of standard Bentel communicator features. Small enough to fit inside the panel cabinet and no extra battery required.

- GSM Quad-Band
- Can be used as a Primary, Backup or Standalone communicator
- Can be installed inside panel cabinet (no extra battery required)
- Compatible with most control panels
- PTM* feature Intelligently monitors phone line and switches automatically to GSM network
- Able to detect VOIP service problems quickly (PTM*)
- 3 programmable I/O terminals
- Telephone voice dialer: 8 voice messages of up to 16 sec. each
- SMS dialer: 11 SMS messages of 100 characters
- 8 telephone numbers for the Telephone and SMS dialers
- Reliable, fast ContactID communications via GPRS (compatible with Sur-Gard® System II and System III receivers)
- Credit balance check for pre-paid SIM CARDS
- Programmable "whitelist" of enabled callers – up to 100 telephone numbers
- Remote activation of outputs through caller recognition (zero charges) or by sending an SMS
- Remote control feedback (SMS message or ring)
- Flexible PC configuration software

* PTM is a proprietary technology.

Range

- BGSM-120KEA: P.C.B., antenna with 2 m cable, metal bracket and supports
- BGSM-120KCA: P.C.B., antenna with 25 cm cable and supports
- BGSM120-BA: P.C.B., antenna with 25 cm cable and container



Remote programming by
www.bentelreachme.com
No communication cost

Some products are not available in all countries. Contact your local distributor for details.



BGSM-100 GSM/GPRS Interface

The BGSM-100 can be used as an always-on backup communicator or it can be used as the primary communicator, eliminating the need for phone lines.

- GSM Quad-Band
- Can be used as a Primary or Backup communicator
- Can be installed inside panel cabinet (no extra battery required)
- Compatible with most control panels
- PTM* feature intelligently monitors phone line and switches automatically to GSM network
- Able to detect VOIP service problems quickly (PTM*)
- 3 Open Collector Outputs, one which can be activated remotely
- Reliable, fast Contact ID communications via GPRS (compatible with Sur-Gard® System II and System III receivers)
- Programmable "whitelist" of enabled callers – Up to 100 telephone numbers
- Remote activation of outputs through caller recognition (zero charges)
- Remote control feedback
- Flexible PC configuration software

* PTM is a proprietary technology.

Range

- BGSM-100KEA: P.C.B., antenna with 2 m cable, metal bracket and supports
- BGSM-100KCA: P.C.B., antenna with 25 cm cable and supports
- BGSM100-BA: P.C.B., antenna with 25 cm cable and container

BGSM Accessories

Model	Description
BGSM-100CA	GSM antenna with magnetic base and 25 cm cable
MAXIASNC	Anti-tamper switch for BGSM-120/100BA
PC-LINK	Programming cable



ANTE-EU Outdoor Remote GSM Antenna

The antenna ANT-EU is used to improve the strength of the signal received by GSM net. The kit includes, in addition to the antenna, the hardware necessary for the installation on a mast and the adapter cable for the connection to the GSM module.

- GSM antenna with 15 m cable and accessories for fixing to a stake
- Dual band: 900 - 1800 MHz
- Polarization: vertical
- Antenna length: 356 mm
- Cable length: 15 m - VSWR < 1.5
- Cover material: fibreglass
- Connectors: SMA and MMCX

Compatible with BGSM-G, BGSM-120KCA, BGSM-100KCA, BGSM120-KEA, BGSM100-KEA and BGSM-A (NOT compatible with BGSM-120/100BA)

B-TEL GT Quad Band GSM Voice and SMS Communicator and Digital Communication

- Vocal menu in 4 languages for programming and use
- Vocal dialer with 64 seconds of vocal messages
- Secure listen-in of premises
- Remote control via SMS
- 9 programmable telephone numbers (16 digits)
- Alphanumeric keypad for operating control
- Power supply: 13.8 Vdc



B-TEL2 Stand Alone Voice and Digital PSTN Communicator

The B-TEL2 is a voice communicator and digital communicator in one. Use the listen-in capability to prevent false alarms.

- Vocal dialer with 64 seconds of vocal messages
- Secure listen-in of premises
- Integrated multi-protocol digital communicator with programmable event code
- Remote control via DTMF
- Programming via software or integrated keypad
- Historical log of calls (255 calls)
- Power supply: 13.8 Vdc and 27.6 Vdc
- 8 programmable telephone numbers for each channel
- 19 digits available for each telephone number: possibility to insert pauses
- 4 types of messages
- Alphanumeric keypad for operating control



SUR-GARD SYSTEM II Single Line IP Receiver

The System II single-line IP receiver is designed for proprietary applications such as gated communities/condominiums, dealers monitoring account system status, private corporate security and government facilities.

System II supports up to 1024 T-Link accounts (K-NET or BGSM-G), of those accounts, 512 can be supervised.

- Desktop or rack mountable
- USB or serial outputs to automation software
- Menu-driven, 40-character, 2-line LCD display with blue backlighting provides instruction when in manual mode
- 4 buttons for manual programming and acknowledgment of alarm signals when in manual mode
- Onboard flash memory and DSP for future software upgrades and enhancements

*Console software not included:
Visit www.bentelsecurity.com for a list of available applications.*



SUR-GARD
A Tyco International Company



K-NET IP Communication Board

IP Module for KY0320. K-NET is the evolution of B-NET, offering the same performance levels but in a smaller package, meaning it can be installed directly inside the container of control panel KY0320. K-NET is a device that may expand the functions of KY0320 control panel through communication over the LAN.

- LAN/WAN Internet protocol
- 128 bit encryption (secure)
- Up/Download and event transmission
- Alarm reception via Sur-Gard® System II/III receiver
- Integration protocol for third party systems, available on request (contact Technical Support service for further information)



B-MOD2 Teleservicing Modem

B-MOD2 is a high-quality, highly reliable modem dedicated to the Teleservice for Bentel Security control panels, and to the remote control of security systems (Telemonitoring).

- Communication protocols: 10-14-40 baud and Contact ID
- 500 event logger
- RS232 serial port and USB port
- External power supply, input 230 Vac 50 Hz, output 18 Vac 150 mA
- Housing for 12 V – 1.2 Ah max battery

Signalling Devices



CALL Self-Powered External Sirens with Flasher

- Strong polycarbonate box with tropicalized metal innerplate: resistant to all weather conditions (protection class IP34)
- Modulated frequency sound emission with the possibility to assign different sounds to the alarm input
- Test circuit for battery level and efficiency with flasher cut out activated by low battery conditions
- Protected against tamper, snatch, flasher damage and wire cutting and with foam injection tamper device (only some models)
- 3 different inputs for alarm signaling on siren sounder, flasher and both (only some models)



Complies with CEI 79-2/2nd Ed. 1993 performance Grade II

LADY Self-Powered External Sirens with Flasher

- Strong polycarbonate box with tropicalized metal innerplate: resistant to all weather conditions (protection class IP34)
- Modulated frequency sound emission with the possibility to assign different sounds to the alarm input
- Test circuit for battery level and efficiency with flasher cut out activated by low battery conditions
- Protected against tamper, snatch, flasher damage and wire cutting and with foam injection tamper device (only some models)
- 3 different inputs for alarm signaling on siren sounder, flasher and both (only some models)



Complies with CEI 79-2/2nd Ed. 1993 performance Grade II

WAVE High Performance Internal Siren

- Operating voltage 12 Vdc
- Sound output volume 104 dBA \pm 3 dB @ 1 m
- Protection class IP31
- Available with or without flasher



Some products are not available in all countries. Contact your local distributor for details.



BMD501 Digital PIR Detector with Pet Immunity

Whether it's a residential or commercial installation, the BMD500 Series combines performance with competitive pricing to offer the perfect solution.

- Digital signal analysis
- Pet immunity up to 25 kg (55 lbs)
- Exceptional white light immunity
- Quad Linear Imaging Technology for sharp analysis of body dimensions and differentiation from backgrounds and pets
- Compact design for residential installations
- Adjustable variable pulse count
- PIR sensitivity adjustment
- Height installation calibration free
- Dimensions (WxHxD): 118x62.5x41 mm
- Power input: 8.2 to 16 Vdc
- Current draw (Standby): 18 mA
- Current draw (Active): 25.5 mA
- RFI protection: 30 V/m 10-1000 MHz
- EMI protection: 50,000 V



BMD503/BMD504 Dual-Tech (PIR + Microwave) Motion Detectors with Anti-Masking and Pet-Immunity

The BMD503 is a dual technology motion detector that combines passive infrared and microwave detection with anti-masking features. The BMD504 dual-technology motion detector without antimasking offers reliable prevention of false alarms at an economical price.

- Anti-masking (BMD503 only) and anti-tamper
- Slim profile design
- Pet immunity up to 25 kg (55 lbs)
- Exceptional white light immunity
- Quad Linear Imaging Technology for sharp analysis of body dimensions and differentiation from backgrounds and pets
- Height installation calibration free
- 2-way PIR/microwave sensitivity adjustment
- User-friendly installation with or without swivel-mount bracket (bracket sold separately)
- Dimensions (WxHxD): 118x62.5x41 mm
- Power input: 8.2 to 16 Vdc
- Current draw (Standby): 18 mA
- Current draw (Active): 25.5 mA
- RFI protection: 30 V/m 10-1000 MHz
- EMI protection: 50,000 V

IR360 360° PIR Detector

Designed for applications which require high sensitivity and cover, such as rooms with large amounts of view restricting furniture.

- Ceiling mount for environments with a restricted field of vision
- Temperature compensation for improved performance at critical temperatures
- Sensitivity adjustment to configure the detector for normal or hostile environments
- Excellent RF immunity
- Exceptional white light immunity
- Operating voltage 9.5 ÷ 14 Vdc
- Standby current: 15 mA
- Case protection grading: IP50
- Dimensions (WxHxD): 115x115x25 mm



RILED Remote LED Indicator

- Supplementary visual signalling for fire and intrusion installation
- Current: max 30 mA
- Dimensions (WxHxD): 83x83x26 mm
- Multi-voltage for intrusion: 12V



GB08 Glass Break Detector

Designed to detect the sounds produced by the shattering of framed glass.

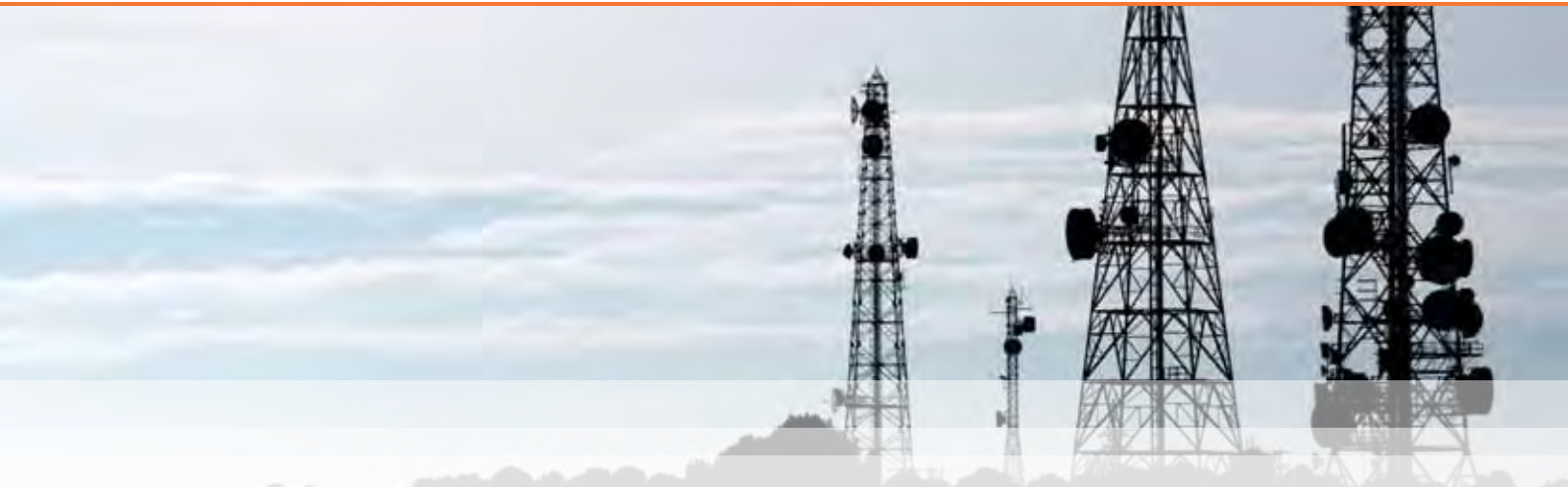
- High-performance microphone
- Sensitivity adjustment
- Digital signal analysis provides exceptional false alarm immunity
- Excellent RF immunity
- Accurate detection of framed plate, laminated, wired and tempered glass types
- Operating voltage 9.5 ÷ 14 Vdc
- Standby current: 15 mA
- Case protection grading: IP50
- Dimensions (WxHxD): 89x64x20 mm



RAY Outdoor Barrier for Long-Range Protection of Property Perimeters

- Active infrared double-ray photoelectric sensor
- Signal LED for system's status
- Excellent RF immunity
- Alarm output
- Tamper output
- Supply voltage: 10 ÷ 18 Vdc
- Current: < 43 mA
- Case protection grading: IP54





BXM12 Controlled Power Station

- Microprocessor controlled power station 230 Vac/13.8 Vdc, metallic box. Available as a universal version (BXM12/30-U or BXM12/50-U) for all control panels, and a BPI version (BXM12/30-B or BXM12/50-B) for KY0320.
- Restoration of BPI bus levels (BXM12/30-B and BXM12/50-B only)
- Insulator function (BXM12/30-B and BXM12/50-B only)
- Auxiliary power supply
- Max current:
 BXM12/30 = 3 A; BXM12/50 = 5 A



BAQ Switching Power Supply Battery-Charger

- 230 Vac/13.8 Vdc
- Max current:
 BAQ35T12 = 3 A; BAQ60T12 = 5 A
- Compatible with ABSOLUTA, KY0320, KY032G, KY08GW



BA2C Linear Power Supply Battery-Charger

- 230 Vac / 13.8 Vdc
- Max current: 2 A

Management Software



BOSS Bentel Operating Security Software

BOSS is an advanced software platform for local and remote management of Bentel Security systems. System programming, site monitoring and firmware management are made easy with the powerful and intuitive interface of BOSS. Improve efficiency and do it all at once with the many features of BOSS that allow true multi-tasking.

The BOSS platform brings an extensive list of features and capabilities:

- Unlimited number of accounts
- Support ABSOLUTA Control Panel Platform
- Backed by SQL database for stability, security and reliability of account data
- Extensive search capabilities
- Tabs: open many accounts at once just like your favorite internet browser
- Single option tagging to minimize the amount of data transfer
- Multi-tasking: continue to work on other accounts while communications are in progress
- Complete management of voice files
- Continuous "Real-Time" status mode
- Built-in Firmware upgrade tool
- Flexible account management
- Queued communication jobs
- Extensive tracking and control of communications jobs
- Managed updates and installation



BOSS will require the following applications to be installed:

1. .NET Framework 3.5
2. SQL Server Express 2005
3. Visual C++ Runtime components

BSS Bentel Security Suite

The Bentel Security Suite is an integrated environment that has been developed to meet requests of local and remote management of Bentel Security systems. It will allow you to program, control and enhance the performance of any all KYO Platform, BGSM Communicator, and all the old Bentel Security Products equipped with a local or remote computer interface. The customer database and print facilities will keep you in touch and informed. It is surely the best way to achieve the maximum from your Bentel Security installation.

All Bentel software are available for free download at www.bentelsecurity.com



Your most valuable tool may be on the web



www.bentelsecurity.com

Robust technical library • User and installation manuals • Software
• Product descriptions • Photography • Application notes
• Marketing materials • Solutions • Certifications

Visit bentelsecurity.com, your complete online resource for Bentel product information.

SECURITY IS

ABSOLUTA

CONTROL PANEL

KEYPADS AND MANAGEMENT DEVICES



ABSOLUTA T-Black & T-White
Integrated proximity reader for keys, cards and tags 3 on-board I/O terminals Supports Roller Blind detectors



Classika LCD
Two-line LCD control keypad, with 3 status LEDs.

Classika LED
LED control keypad: 16 zone LEDs; 8 status LEDs.



Premium LCD
Two-line LCD control keypad with proximity reader and 3 programmable I/O terminals.

Premium LED
LED control keypad with proximity reader and 3 programmable I/O terminals: 16 zone LEDs; 8 status LEDs; 3 proximity reader LEDs.



ECLIPSE + SAT
Flush-mounted proximity reader (available in various formats to be used in conjunction with most plates currently available).

*Proximity key



PROXI + PROXI-CARD
Proximity key/card reader for indoor/outdoor use (IP34).

*Proximity card



PROXI TAG
Proximity tag 60x30 mm. Available in White, Gray and Black



MINIPROXY
50 x 30 mm proximity tag.

PROGRAMMING & COMMUNICATING SYSTEMS



BGSM-120
GSM/GPRS Universal alarm communicator with voice messages on board.



BGSM-100
GSM/GPRS communicator interface.

CONTROL PANEL ACCESSORIES



M-IN/OUT
Module with 6 programmable IN/OUT terminals.



B-ISOL
BUS BPI isolator module.

WIRED DETECTORS



BMD501
Digital PIR detector with pet immunity.



BMD503
Digital PIR and microwave detector with anti-masking.



BXM-12
Microprocessor controlled power station.



KMD20
Wireless pet-immune PIR detector.



KSD20
Wireless smoke detector.



KRP10
Personal panic button.



KRC10
4 button key fob.

SIGNALING DEVICES



Lady
Self powered siren for outdoor use: antifoam and strobo versions.



Call
Self-powered siren for outdoor use with flasher. Antifoam and strobo versions.



Wave
Siren for indoor use. Self-powered and strobo versions.

WIRELESS SYSTEMS & ACCESSORIES IN 433 MHz



VECTOR/RX8
Wireless receiver, supporting up to 8 zones.



VRX32-433 /VRX32-433EN
Wireless receiver, supporting up to 32 zones. EN50131 compliant.



ASD20
Wireless smoke detector.



AMC30
Wireless magnetic contact with auxiliary input for rollerblind detector.



ARC20
4-Button keyfob.



AMD20
Wireless pet-immune PIR detector.



WIRELESS SYSTEMS & ACCESSORIES IN 868 MHz



VRX32-868
Wireless receiver, supporting up to 32 zones.



KMC10
Wireless door/window magnetic contact, supporting up to 32 zones.



KMC20
Vanishing wireless door/windows magnetic contact, supporting up to 32 zones.



KMC30
Wireless door/window magnetic contact with auxiliary input for rollerblind detector.



BENTEL SECURITY
A Tyco International Company



BENTEL
SECURITY
A Tyco International Company

For more information on the products featured here
or on any other Bentel Security product please call:

+39 0861 839060

E-mail: infobentelsecurity@tycoint.com

or contact your Authorized Distributor.

Please visit us at www.bentelsecurity.com

© 2012 Tyco International Ltd. and its Respective Companies. All Rights Reserved.

PN 30001395

tyco
Security Products

American Dynamics

KANTECH

CEM SYSTEMS

SOFTWARE HOUSE

BENTEL
SECURITY

DSC

Visonic